

# RoyalTek RN1 Navigator Quick Start Guide

## Getting Started,

Congratulations on your purchase of the RN1 Navigator. RN1 can bring you to the destination of your choice by using the GPS system.

You can simply use your RN1 by mounting the device holder on the windshield, plug in the car charger and press the power button on the top of the RN1, and then just GO!

**For your safety consideration, please do not operate your RN1 while driving. Please set your destination or setting before you drive or park your car in a safe area for doing your operation. Please always pay full attention to the road and use your RN1 as an aid by only taking a glance at a time.**

Now enjoy your safe driving with your RN1.

## Packing List,

1. Device, RN1
2. Car Mount
3. Car Holder
4. Car Charger
5. Quick Start Guide
6. Warranty Statement Card
7. CD/DVD
8. USB Cable (Optional Accessory)
9. Earphone (Optional Accessory)
10. AC Adapter (Optional Accessory)
11. Dashboard (Optional Accessory)
12. TMC Antenna (Optional Accessory)

\*Contact your local store which you purchased the device immediately if any of the items listed above are damaged or missing.

## Basic Operation, Knowing your RN1

- Top and Left/Right side views

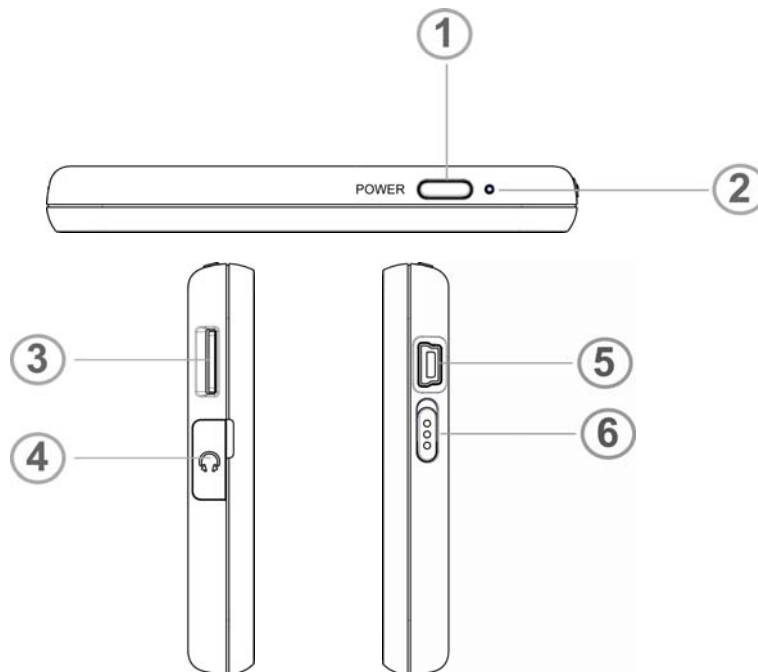


Table 1: Top and Left/Right controls

No	Component	Description
1	Power button	Standby mode by pressing the button for sleep/wake.
2	Power status LED indicator	Indicates the battery charging status. <ul style="list-style-type: none"><li>● Green--Battery is fully charged or battery high.</li><li>● Orange--Battery charging</li><li>● Red—Battery low</li></ul>
3	Micro SD slot	Accepts Micro SD storage cards, allowing you use audio and image files stored in it for use with internal applications.
4	Earphone connector	Connects to earphone
5	USB port/Docking connector.	For USB port: connects the device to computer running on the Microsoft Windows platform. Also serves as the power connector for charging the device.
6	Battery Switch	To do a hard reset of the device and suspend the battery.

## Starting Operation

### Step 1 Mounting your RN1 Navigator

1. Install the car mount on the selected area (see Photo 1-1)
  - 1.1 Press the suction cup of the car mount firmly against to the windshield.
  - 1.2 Press down the lever to fix the suction cup in place.
  - 1.3 Adjust the angles of the arms to your proper viewing position.
2. Mounting the car holder with your RN1.
  - 2.1 Fit RN1 down in the car holder first, and then lock it using the plugs on the bottom of the car holder (see Photo 1-2).
  - 2.2 Firmly dock the RN1 with device holder on the car mount which has been mounted to your windscreen (see Photo 1-3).

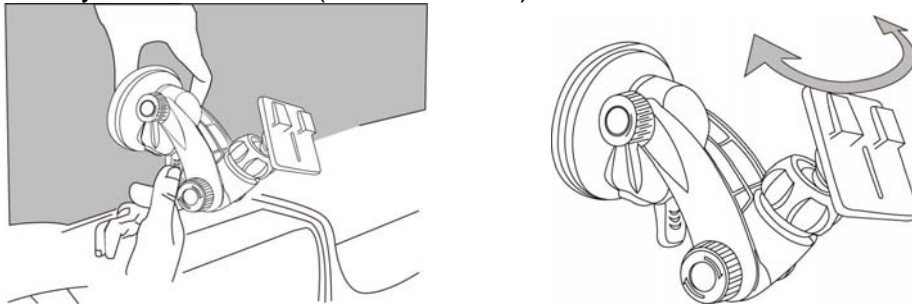


Photo 1-1

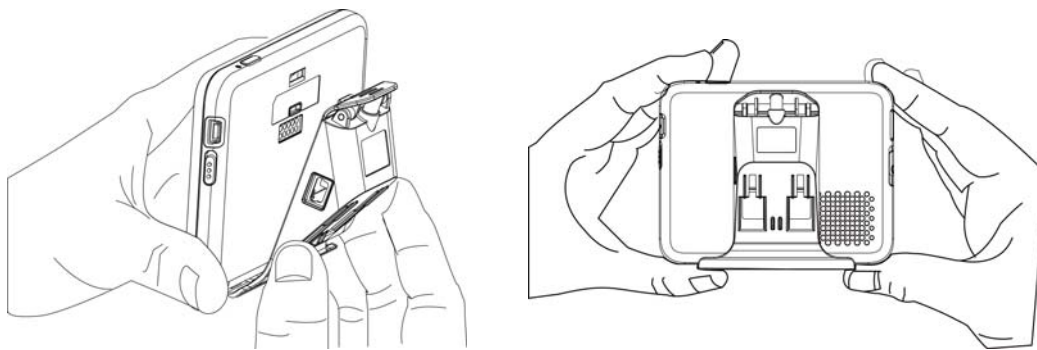


Photo 1-2

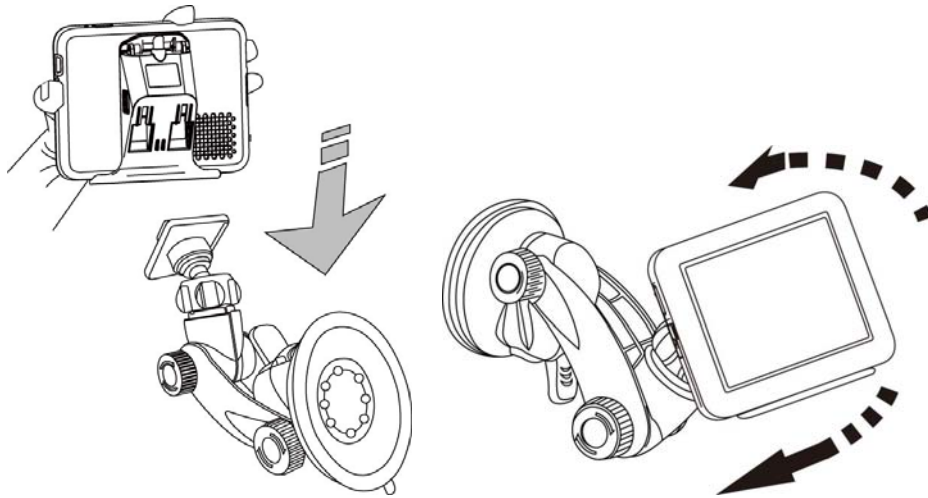


Photo 1-3

### 3. Charging your RN1 device

3.1 Plug the car charger to the 12 V outlet of your car and then connect the charger cable to the mini USB port of car holder ; Please make sure the battery switch status in "ON" mode. (See Photo 1-4)

3.2 You now can let your RN1 have the continuous power by the car charger.

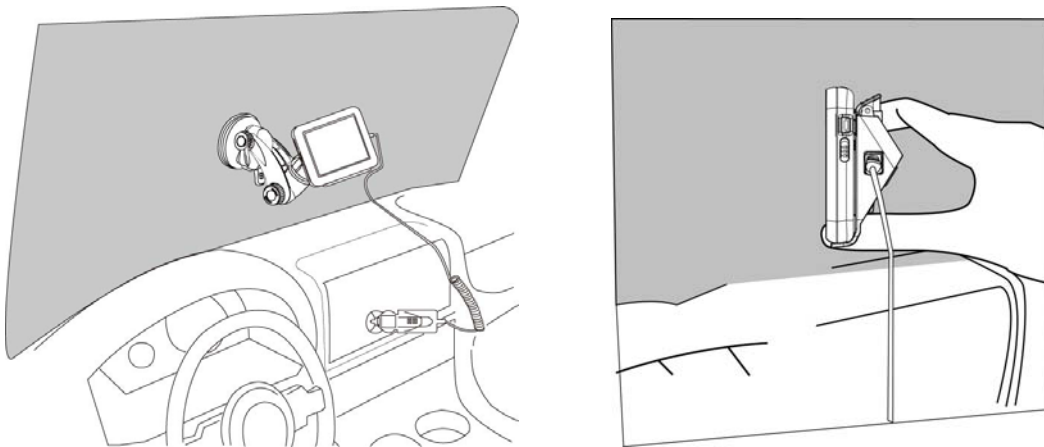


Photo 1-4

### Step 2 Starting your RN1

1. Push the battery switch ON.(Default status OFF)
2. Press the power button to turn on your RN1, then the main menu screen appears.
3. Tap Navigation, you will see the map screen displayed.
4. Please read the User's Guide of Navigation software for detailed setting information.
5. Please be noted, the very first time turning on your RN1 may take some time to obtain a valid GPS fix.

### **Additional Application with the Optional SKU,**

#### **1. TMC Accessory ( only available in certain areas)**

You may use external TMC accessory to perform TMC function when you are in a TMC Traffic signal available areas. Please visit: [www.tmcforum.com](http://www.tmcforum.com) for the TMC coverage information.

Please connect the TMC accessory to the Mini USB port of car holder for the TMC application, and placing the TMC accessory in a place which will not interfere with driver. (see Photo 1-5)

Please refer to the User's Guide of Navigation software for the detail TMC operating information.

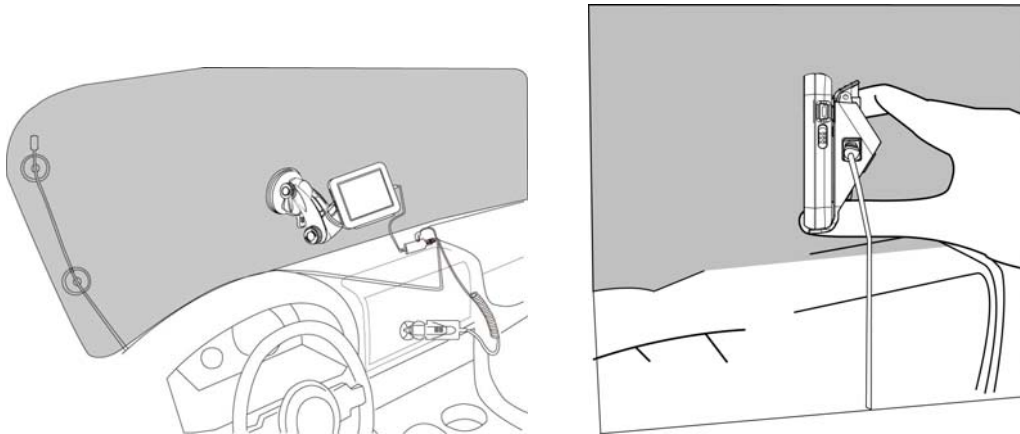


Photo 1-5

### **Disclaimer**

Please be noted that RoyalTek Company Ltd., and the licensed Navigation Software are not responsible for any damage caused by an accident due to unreliable TMC radio transmissions by national, regional, or local broadcasters caused by TMC service restrictions, or by natural and man-made conditions that prevent real-time information from being delivered to the device. Both companies are not responsible for the quality or accuracy of the events been broadcasted.

### **Resetting the RN1 Device**

There shall be rare chance to reset RN1 under normal circumstances. However, in such case a problem cannot be corrected, you may reset the RN1 device by the following way :

Hard reset :

- To do a "Hard reset" Disconnect all cables, including the AC adapter, from your

device.

By sliding the hard reset switch on the primary ON/OFF switch on the right side of the device from OFF to ON position then tap the power button.(see photo 1-6)

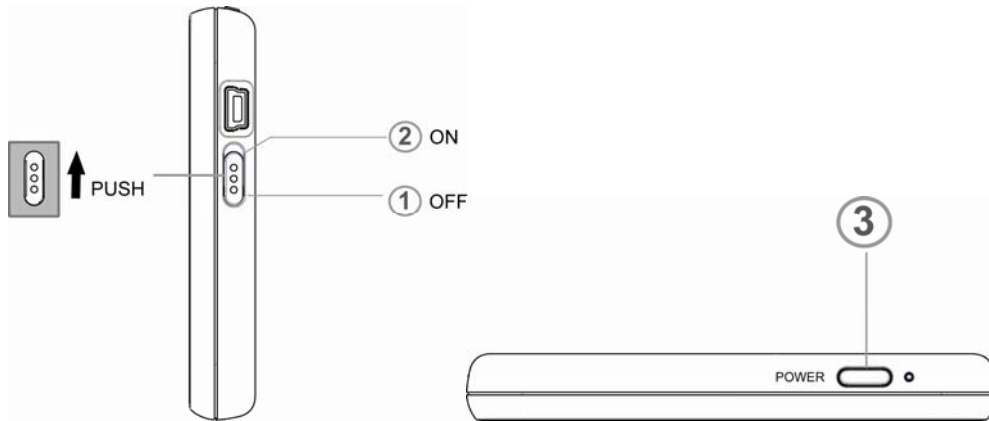


Photo 1-6