

RoyalTek RN5 (NS-4102) Navigator Quick Start Guide

Getting Start

Congratulations on your purchase of the RN5 Navigator. RN5 can bring you to the destination of your choice by using the GPS system.

You can simply use your RN5 by mounting the device holder on the windshield, plug in the car charger and press the power button on the top of the RN5, and then just GO!

For your safety consideration, please do not operate your RN5 while driving. Please set your destination or setting before you drive or park your car in a safe area for doing your operation. Please always pay full attention to the road and use your RN5 as an aid by only taking a glance at a time.

Now enjoy your safe driving with your RN5.

Packing List,

1. Device, RN5
2. Car Mount
3. Car Holder
4. Car Charger
5. USB Cable (Optional Accessory)
6. Quick Start Guide
7. Warranty Statement Card
8. DVD or CD
9. Earphone (Optional Accessory)
10. AC Adapter (Optional Accessory)
11. Dashboard (Optional Accessory)
12. TMC Accessory (Optional Accessory)

*Contact your local stores which you purchased the device immediately if any of the items listed above are damaged or missing.

Basic Operation

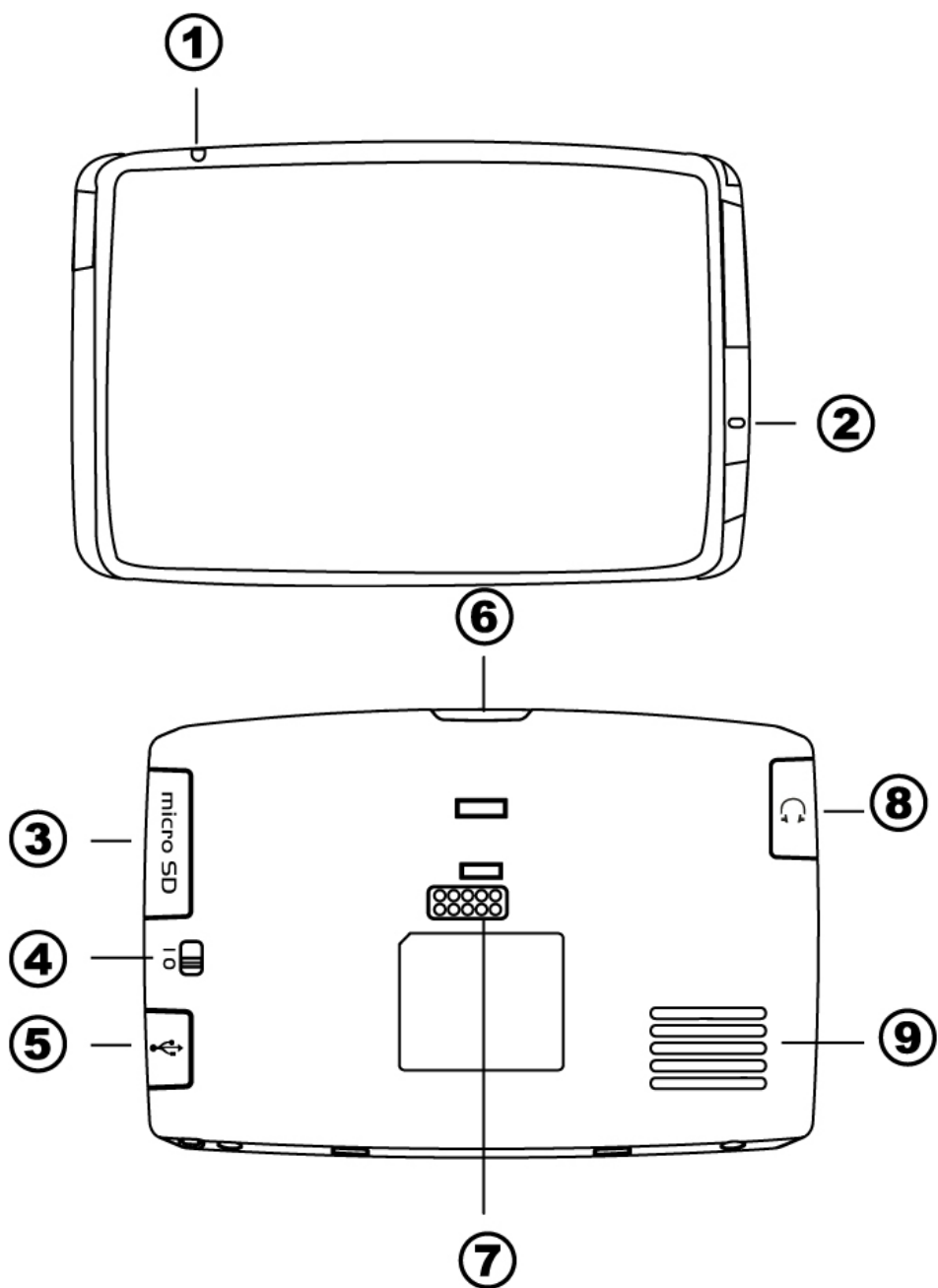


Table1: Front and back side controls

NO	Function	
1	Microphone	Receives your voice while using hands-free of Bluetooth function.
2	Charge status LED	Indicated the battery charging status. On: Charging Off: Charging down

3	Micro SD	Accepts Micro SD storage cards, allows you to use audio, image files stored in it for using internal applications.
4	Battery Switch	On/ Off
5	USB port/ Docking connector	the mini-USB connector of the main device can be used to charge power or upload files from computers.
6	Power Button	Standby mode by pressing the button for sleep/wake.
7	I/O port of Car Holder	I/O port while connecting with car holders.
8	Earphone	Standard stereo headphone jack.

Starting Operation

Step 1 Mounting your RN5 Navigator

1. Install the car mount on the selected area (see Photo 1-1)
 - 1.1 Press the suction cup of the car mount firmly against to the windshield.
 - 1.2 Press down the lever to fix the suction cup in place.
 - 1.3 Adjust the angles of the arms to your proper viewing position.
2. Mounting the car holder with your RN5.
 - 2.1 Fit RN5 down in the car holder first, and then lock it using the plugs on the bottom of the car holder (see Photo 1-2).
 - 2.2 Firmly dock the RN5 with device holder on the car mount which has been mounted to your windscreen (see Photo 1-3).

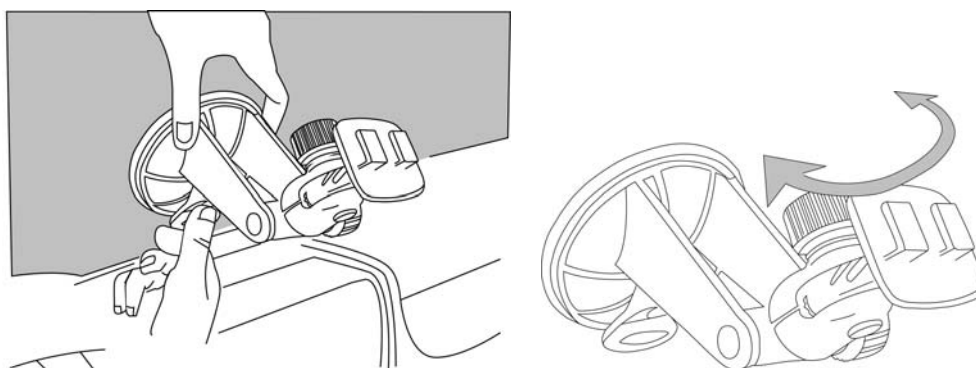


Photo 1-1

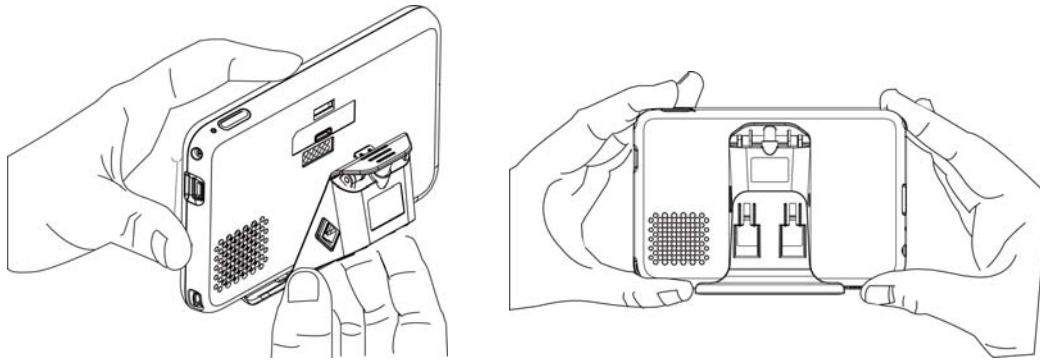


Photo 1-2

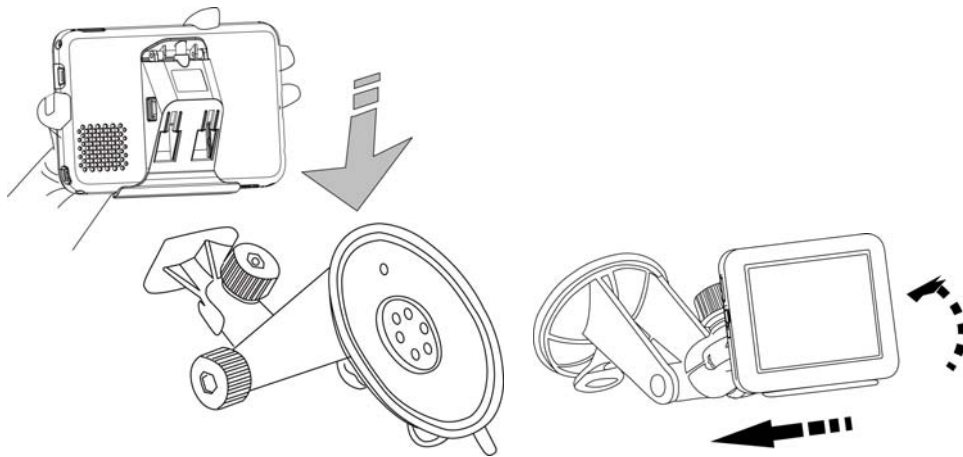


Photo 1-3

3. Charging your RN5 device

3.1 Plug the car charger to the 12 V outlet of your car and then connect the charger cable to the mini USB port ; Please make sure the battery switch status in “ON” mode.
(See Photo 1-4)

3.2 You now can let your RN5 have the continuous power by the car charger.

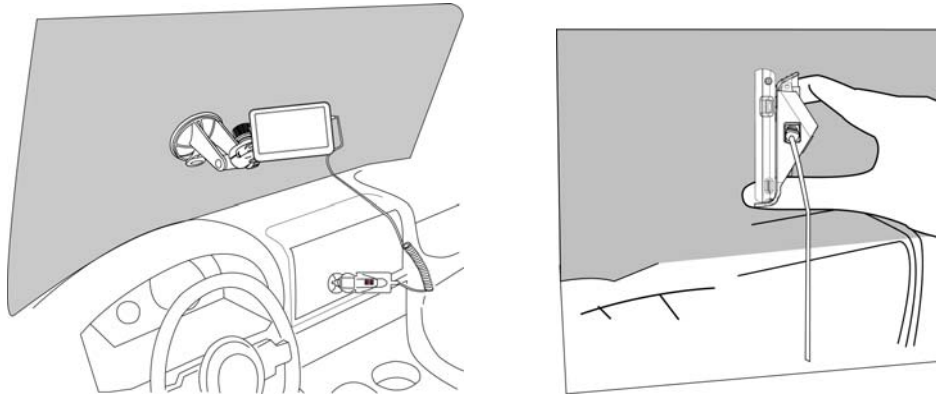


Photo 1-4

Step 2 Starting your RN5

1. Push the battery switch ON.(Default status OFF), and the main menu screen appears.
2. Tap Navigation, you will see the map screen displayed.
3. Please read the User's Guide of Navigation software for detailed setting information.
4. Please be noted, at the first time turning on your RN5 may take some time to obtain a valid GPS fix.

Additional Application with the Optional SKU,

1. TMC Accessory (only available in certain areas)
You may use external TMC accessory to perform TMC function when you are in a TMC Traffic signal available areas. Please visit: www.tmcforum.com for the TMC coverage information.
2. Please connect the TMC accessory to the Mini USB port of car holder for the TMC application, and placing the TMC accessory in a place which will not interfere with driver. (see Photo 1-5)
3. Please refer to the User's Guide of Navigation software for the detail TMC operating information.

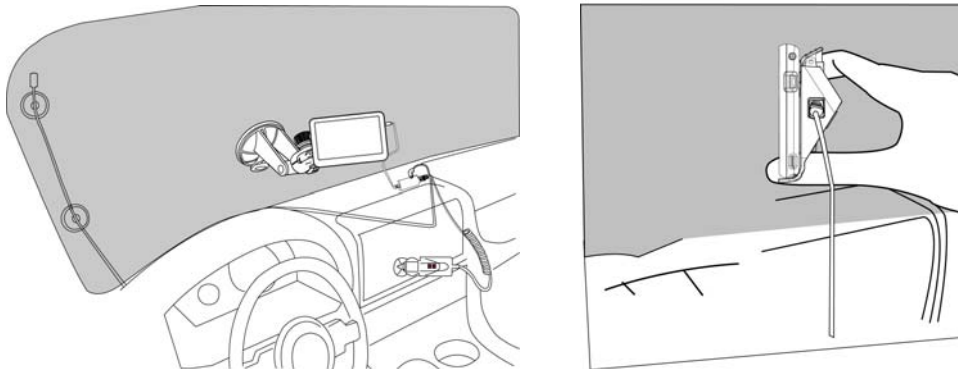


Photo 1-5

Disclaimer

Please be noted that RoyalTek Company Ltd., and the licensed Navigation Software are not responsible for any damage caused by an accident due to unreliable TMC radio transmissions by national, regional, or local broadcasters caused by TMC service restrictions, or by natural and man-made conditions that prevent real-time information from being delivered to the device. Both companies are not responsible for the quality or accuracy of the events been broadcasted.

Resetting the RN5 Device

There shall be rare chance to reset RN5 under normal circumstances. However, in such case a problem cannot be corrected, you may reset the RN5 device by the following way :

- Do a "Hard reset" Disconnect all cables, including the AC adapter removed from your device.
- Switch Battery switch on the back of the device from OFF to ON position.(see photo 1-6)

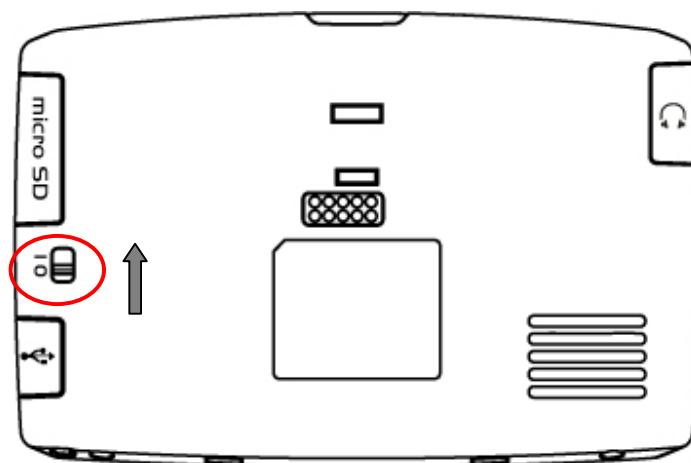


Photo 1-6